



COMMITTED TO EVERY CHILD'S UNLIMITED POTENTIAL

# Mead Matters

10/09/2015      Principal Update

- Upcoming October Events
- Fall Fundraiser ~ Award Assembly
- Community School Information
- National School Lunch Week
- 100 Mile Club
- Animals/Dogs on School Property

## Mead Elementary

520 Welker Ave.  
Mead, CO 80542  
970-535-4488

School Hours:  
9:00 a.m. – 3:35 p.m.

## Principal:

Betsy Ball



**Photo of the Week:** October Late Start Day, Jeff Pfeifer getting his head shaved by Carely Palomo

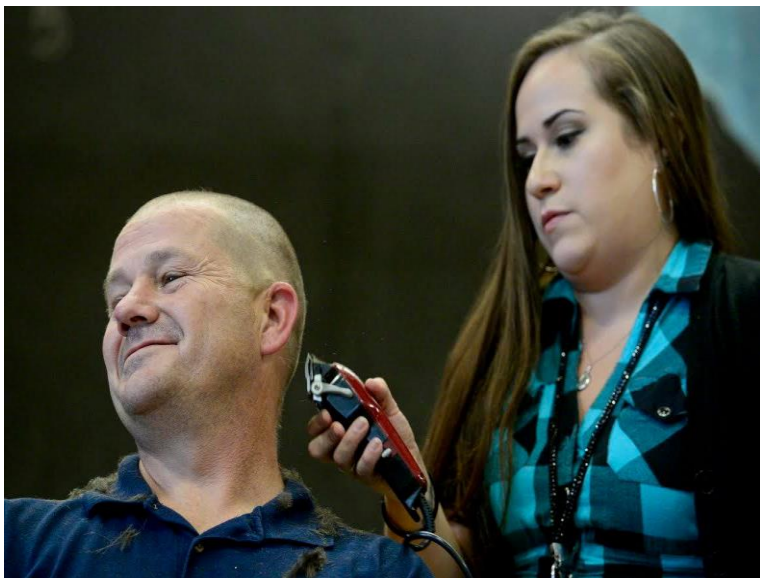
## Our Vision

We are a community of students, teachers and parents committed to the development of the whole child through a belief in every child's unlimited potential by focusing on high expectation, rigor, raising achievement and developing character.



## Fall Fundraiser ~ Award Assembly

What a great assembly we had during the October late start day. Students at every grade level were recognized by their teachers and given Mustang Awards. Thank you again families for raising so much money during our Fall Fundraiser. Because of your efforts, Mr. Jeff shaved his head as promised and the students got to Silly String me. Other than getting some in my teeth because I was laughing, it was much better than last year's slime. I'm so thankful to the PAC and Shannon Rowan for organizing this record breaking fundraiser. Over \$21,000 was raised! All money stays at our school and is used for field trips, projects, classroom materials, technology and more.



## Upcoming October Events

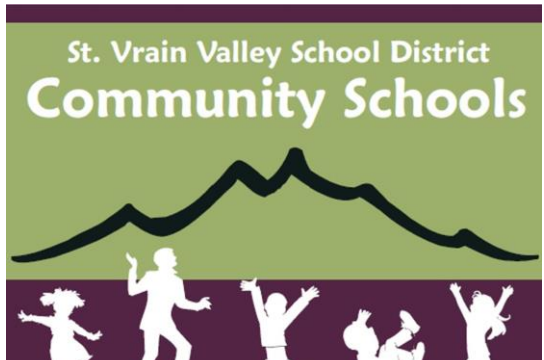
Dates to remember:

- 12<sup>th</sup> – 16<sup>th</sup> - National Lunch School Week, "Take Your Parents to Lunch"
- 13<sup>th</sup>, 14<sup>th</sup>, 15<sup>th</sup> – Parent/Teacher Conferences 3:40-8 pm
- 16<sup>th</sup> NO School
- 21<sup>st</sup> Hearing & Vision Screening
- 23<sup>rd</sup> Fall Harvest Moon Festival 4-8 pm
- 27<sup>th</sup> 4<sup>th</sup> Grade Music Concert
- 30<sup>th</sup> ALL School Movement Halloween Style!



Find more news and events at <http://mes.svvsd.org>





## WORLD DRUMMING ENSEMBLE

Tuesdays

3:35-4:35

October 6, 13, 20, 27

November 2, 9, 16

December 1, 8

\$45.00 (9 classes)

Concert Date: 12/15 @ 6pm

Mead Elementary Gym

<https://drive.google.com/file/d/0B4RqY25xXDvsRV9ZUmt1UmFXOVE/view?usp=sharing>

## UKULELE CLUB

Thursdays

3:35-4:35

October 8, 15, 23, 29

November 5, 12, 19

December 3, 10

2<sup>nd</sup>-5<sup>th</sup> Grade

\$45.00 (9 classes)

Concert Date: 12/15 @ 6pm

Mead Elementary Gym

<https://drive.google.com/file/d/0B4RqY25xXDvsUVVMQ2FRdTc1Ulk/view?usp=sharing>

## 2015-2016 RATES

Registration Fee:

\$50 Single Child

\$75 Family

Mustang Corral

7-9 AM Full Day \$11/Day

3:35-6 PM Full-Day \$13/Day



Mead Community School Presents:

## World Drumming Ensemble

Mustang Corral—a place where children come to play, learn, interact, and have fun!! We provide before and after school childcare that is licensed by the state of Colorado, and is conveniently located in the Mead Elementary cafeteria.

**Space is still available so come join us!**

Contact Info:

Carely Palomo

Program Manager

Palomo\_carely@svvsd.org

Phone: 720-652-8046

Website:

<https://sites.google.com/site/meadcommunitys>

**WHO:** Adults (18+)

**WHEN:** Tuesdays 4-5pm

Oct. 20, 27 ~ Nov. 3, 10 ~ Dec. 1, 8, 15

**WHERE:** Mead Elementary Gym

(please come to the outside door north of the front door, by the gym/library)

**COST:** \$30 for all 7 classes (save \$5)

\$5 for drop in days

\*Please send in forms and payment with your child, or drop off directly in office.



## National School Lunch Week

National School Lunch Week is October 12-16 and SVVSD invites families to help us celebrate the week with **Take Your Parents to Lunch Day!**

We are encouraging parents to find a day during National School Lunch Week to join their student for lunch, take a Lunch Selfie featuring you, your student and your meal, and then send it to [harter\\_sarah@svvsd.org](mailto:harter_sarah@svvsd.org) for a chance to win a prize!



## 100 Mile Club

Come join the fun!! 100 Mile Club meets on Tuesday and Thursday Mornings from 8:20 a.m. to 8:50 a.m.

Parent reminder:

Please do not drop your child off early, there is no adult supervision on the blacktop until 8:20.



## Animals/Dogs

In order to maintain a healthy and safe environment for all, animals of any kind are not permitted on school property.

## Teacher Spotlight of the Month

Meet

Ms. Pam Heimstra,  
Grade: Preschool



I have been the Preschool teacher at Mead Elementary for the past 13 years. I love coming to school to be with our students. Our staff has always impressed me with their dedication to each student. Mead is the place to be.

--Ms. Pam